

作曲専攻課題 平成 27 年 2 月 1 日 (日) 13:00~16:00

(課題 C) 和声法課題 (3 時間)

次の 2 つの課題を実施しなさい。必要と思う標語・記号等は適宜記入すること。

I. バス課題

Musical score for Bass exercise I. It consists of two staves: a treble clef staff and a bass clef staff. The key signature is two flats (B-flat and E-flat), and the time signature is 6/8. The melody in the bass clef staff starts with a dotted quarter note on G2, followed by eighth notes on F2, E2, D2, C2, B1, and A1. The treble clef staff contains a few notes in the first measure and is otherwise empty.

II. ソプラノ課題

**Allegretto**

Musical score for Soprano exercise II, first system. It consists of two staves: a treble clef staff and a bass clef staff. The key signature is two sharps (F# and C#), and the time signature is 3/4. The melody in the treble clef staff starts with a quarter note on G4, followed by quarter notes on A4, B4, C5, B4, A4, G4, and F#4. The bass clef staff is empty.

Musical score for Soprano exercise II, second system. It consists of two staves: a treble clef staff and a bass clef staff. The key signature is two sharps (F# and C#), and the time signature is 3/4. The melody in the treble clef staff continues from the first system with quarter notes on E4, D4, C4, B3, A3, G3, and F#3. The bass clef staff is empty.

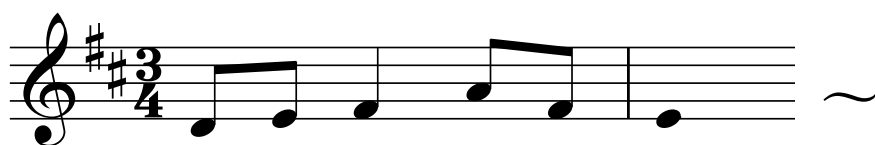
Musical score for Soprano exercise II, third system. It consists of two staves: a treble clef staff and a bass clef staff. The key signature is two sharps (F# and C#), and the time signature is 3/4. The melody in the treble clef staff continues from the second system with quarter notes on E3, D3, C3, B2, A2, G2, and F#2. The bass clef staff is empty.

作曲専攻課題 平成 27 年 2 月 1 日 (日) 13:00~16:00

(課題 D) 与えられたモチーフ (動機) による演奏 (3 時間)

次の 2 つのモチーフ (動機) から 1 つを選択して、別紙に 20~30 小節程度のピアノ曲を試作しなさい。  
試作の時間は 3 時間とする。その後ピアノで演奏をすること。

I.



II.

